

# Sheridan

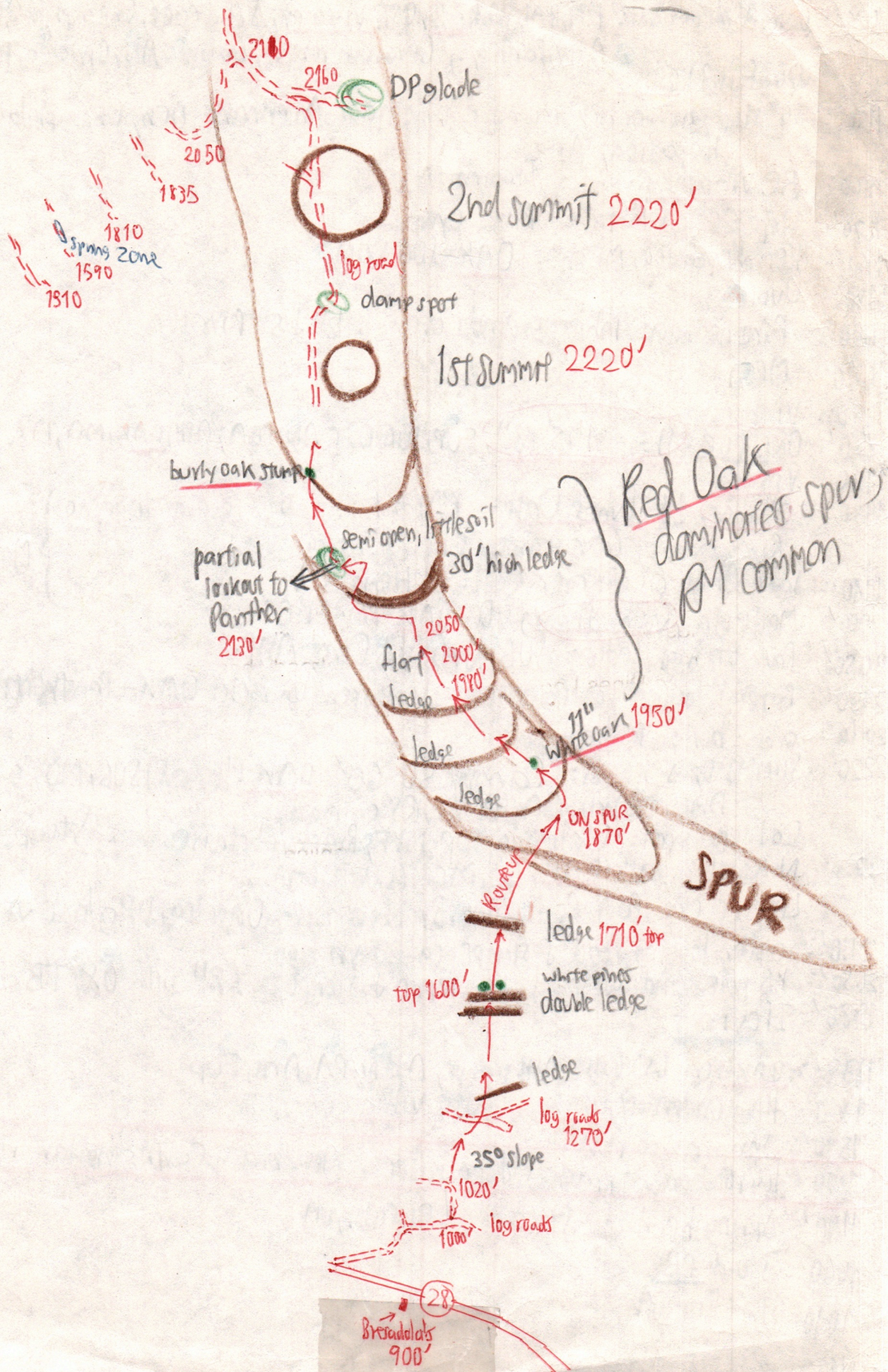
6/19/73

136-1

Base 31.84	900'
.76	1000'
.74	1020'
.64	1150'
.55	1260'
.54	1270'
.40	1440'
.37	1480'
.27	1600'
.24	1640'
.18	1710'
.06	1870'
31.04	1900'
31.00	1950'
30.96	2000'
.92	2050'
.84	2130'
.78	2210'
Summit .77	2220'

1.07" = 1320'  
.81" = 1000'

30.82	2160
.86	2110
.92	2050'
.96	2000'
30.98	1980
31.08	1835
.10	1810
.14	1760
.28	1590
.34	1510'
.54	1270'
.60	1190'
.68	1095'
.71	1060'
.75	1010'
Base 31.83	910'



# Elevations for Species

B62

Base Rte 28 = 900'

1000': PA, Dmarg, MO, Carp, ASH, Eup, BB, Nam

1020': Oak-B dominant: MM, BASS, ASH, BB, OST, Vib acer, Solid caes, Chiraphila?, Ox plant,

Duff is B + OAK Adiv, Parth q., Geranium rubt., Galium, AN, Circaea, Poa

} High diversity  
} Low cover

1150': 30° slope, no bedrock, much soil, some rock: Antennaria, Pen, Chiraphila?

1260': BC, Vib acer in fl. Fragmenting Ledge

1270': Slope 20° at log road = Ribes cynos.

1440': Hem, Hepatica, Mitch. OAK-SUG DOM.

1480': Uvul

1600': Pine needles inhibit ground cover 12" & 5" Pines.

1640': MC

1710': Vib acer

1870': ONS PUR: Shags 4" 5" 18", EUP, SUB, OST, AN, POA, ASH, OAK, MO, D?

1900': Vib acer

1950': 3" Shag, 11" White Oak: RM to 12". No recent logging

Ribes cynos, Ger. robt, CIC, Dmarg

1980': Same Amel. as on Romer coll. Hems 5"

2000': Medeola Young Shag, BC-OAK-RM-CIC

2050': Base of high ledge; SUB, AN, VB, CIRC, ASH

2130': Partial lookout to Panther: Semiopen on rock: OAK-Polypodium HAM, MC, AN

2210': above but oak stump:

2220': SUMMIT, S-KNOB: Canopy 50-60' OAK (logged) SUB, MO, a few ASH.

Dmarg, Aris, AA, Peili, RS on roads.

Col wet spot: Ox lunda, DP, NYF, Brachyelytrum

Stumps of OAK } only 10 yrs old?  
SUB  
HEM  
ASH

2220': N KNOB: SUB, OAK, BC, MO (SUB DOM)

Lush cover: POA, Peili, Eup, Brachyelytrum, Onoclea, DP, glade

2110': older logging road & stumps, ca. 30 yrs ago.

2050': YB polestand off road, Hem repro & stumps to 18" with OX, TB dam to 2000'

1980' Ilex mont

1835': OAK-Hem, OST, BASS, ASH stumps, Adiv, PA, Aris, Eup

1810': Hem understory: OAK, SUB, OST, Vib acer

1590': Spring on log road

1270' log road down through 3' deep soil cut: Acid brown earth, angular rocky till, beneath mull

1190' Spring head of stream. Leucobryum.

1080' 3 old PB

1040' 12" Bigtooth

910' Rte 28 Base